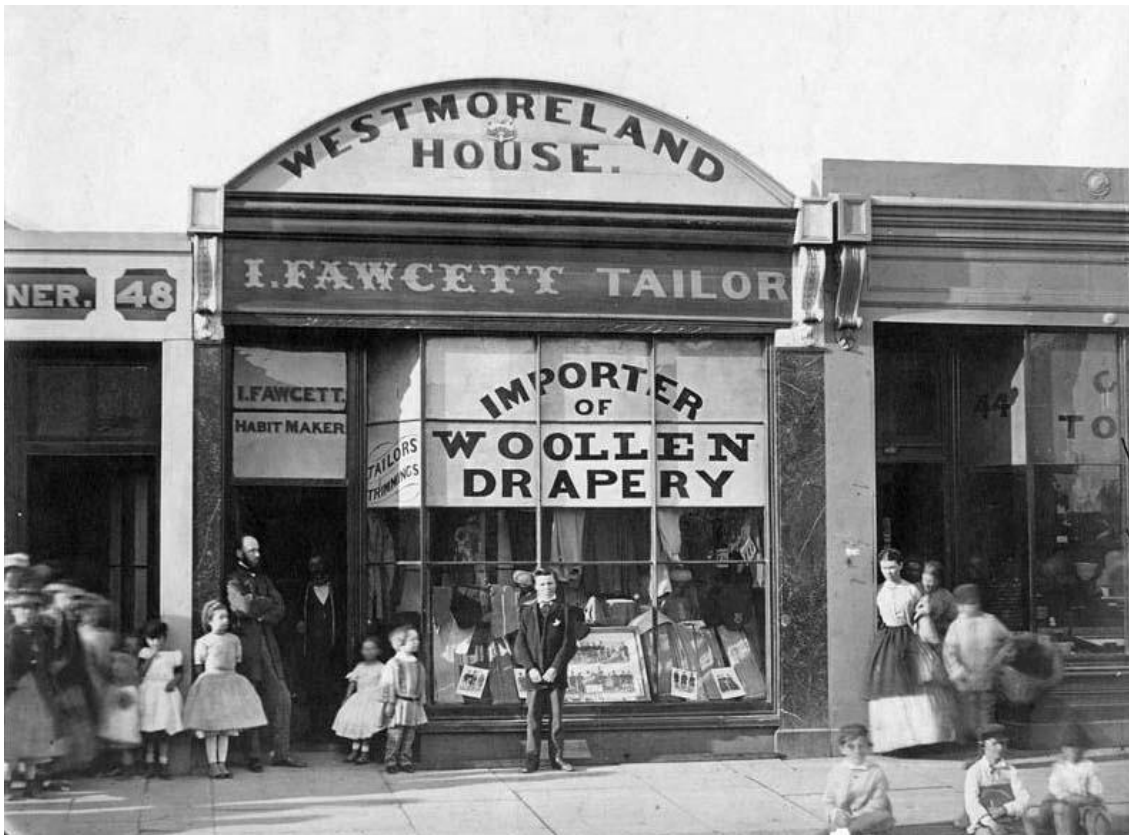


Fitzroy History Society
GETRUDE STREET WALK APRIL 27 & 28 2013
Miles Lewis



Isaac Fawcett, tailor, Westmoreland House, 46 Gertrude Street, Fitzroy] detail of a photo by Davies & Co, c 1866. State Library of Victoria H639 LTAF453

This walk takes us from Nicholson Street and the Carlton Cardens, down Gertrude Street almost to Smith Street. Its purpose is to look at the physical development of the street and its surroundings - the land subdivision, street layout, buildings, water supply, &c - in relation to historical and social factors.

Start

Meet at the Westgarth (kangaroo) drinking fountain at the Nicholson Street entrance to the Exhibition Buildings

Cross at the lights, south to the forecourt of Osborne House, 40 Nicholson Street

Discuss: 'Helena House', later 'Osborne House', by Charles Laing for John McPherson, 1850; its role at the time of the 1880 & 1888 exhibitions.

Return to Gertrude Street and

Discuss: Cable Tram Engine House, by Alexander Davidson for Melbourne Tramway and Omnibus Company, 1886

Turn onto south side of Gertrude Street and walk eastwards

Cross to north side of Gertrude St and walk east

Discuss: *Fitzroy Ward Improvement Act*, Glass Terrace, 64-78 Gertrude St; Royal Terrace B and Dr Crook's house

cross at the lights and walk east on the south side of Gertrude St

diverge into Napier Street to see Melbourne Waterworks cover, then continue east on the south side of Gertrude St

[George St]

Discuss

184-186 C Johnston & Co, furniture warehouse.

[Gore St]

Pause at 222-4 Gertrude Street and look east

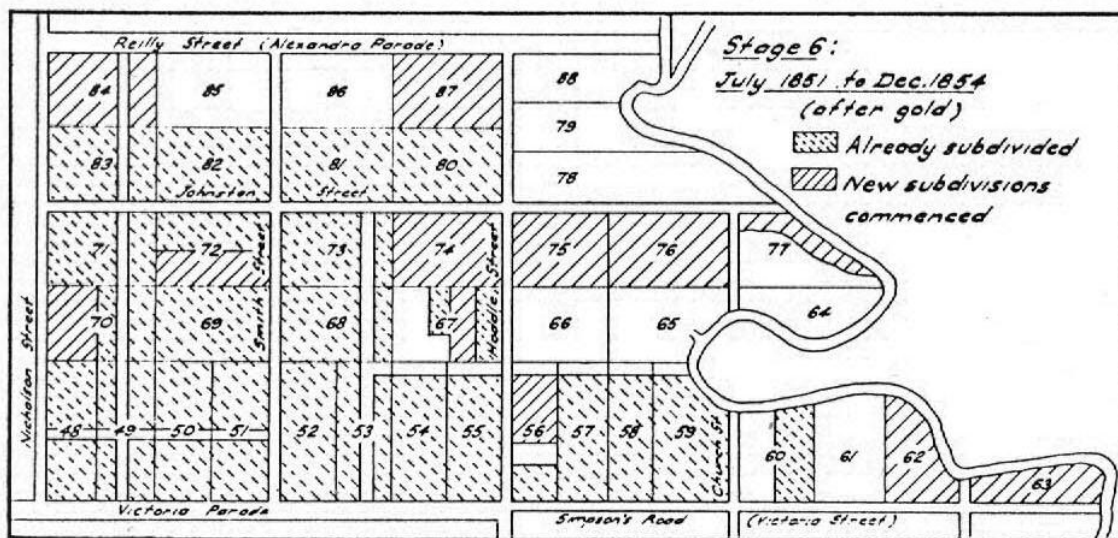
Discuss the position of Smith St; Collingwood and East Collingwood; Langridge St, the slope, and the Collingwood Flat

Return to Gore St, look south

Ascend to roof of 72 Gore Street

Conclude

ILLUSTRATIONS



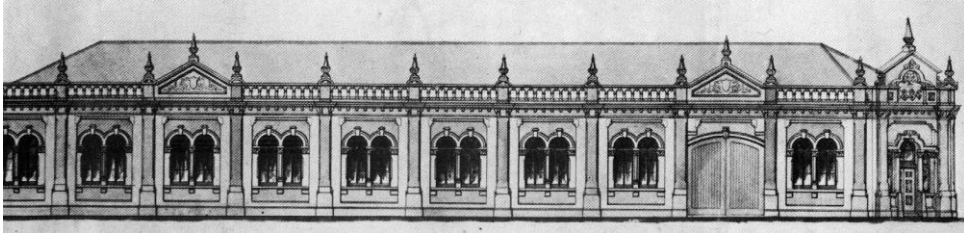
The ongoing subdivision of Newtown, 1851-4, from Bernard Barrett, *The Inner Suburbs* (Melbourne UP, Melbourne 1971), p 21. Gertrude Street passes through lots 48-51 and had just reached its full extent to Smith Street.



Detail of a Panoramic view of Fitzroy from the Exhibition Buildings, H Clements, photographer, c 1880: State Library of Victoria, LTL H14127 MC 3/6. At the extreme left is the corner of Gertrude Street; then the imported wooden bungalow used as a winter residence John Carre Riddell, built in 1853 under the supervision of Wharton & Burns. The detached white building is Helena House (later Osborne House) built in 1850-1 for John Macpherson, to the design of Charles Laing.



Osborne House, Nicholson St, engraving by Samuel Calvert in *The Commercial Album of Victoria*, (unattributed, undated [Melbourne, before 1887, though incorrectly attributed to 1891]). The verandah was added in the early 1880s, when it was a boarding house, and flanking wings were built by George Nipper in 1887 to the design of Charles Webb. Royal Terrace, 50-68 Nicholson Street, by John Gill, 1854-6: detail of a photo by Charles Nettleton c 1868.

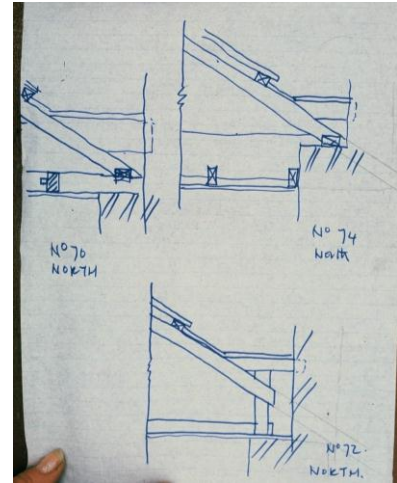


The cable tram engine house, corner of Nicholson and Gertrude Sts, by Alexander Davidson for the Melbourne Tramway and Omnibus Company, 1886, with the addition of the observation room for the motor controller. Metropolitan Tramways Authority.

South side of Gertrude Street Continued

<i>House No.</i>	<i>Occupiers</i>	<i>Owners</i>	<i>Description</i>
13	James Hooy	Thomas William Stuart	Brick House 3 rooms and small kitchen yard and brick convenience
14	Archibald P. Allen	Thomas William Stuart	Brick House 3 rooms and small kitchen yard and brick convenience
15	John Dickenson	John Dickenson	Brick House 4 rooms wood kitchen wood stable yard and wood convenience
16	Unoccupied	Francis Black	Brick House 4 rooms large yard and wood convenience
17	Nathaniel Thomas Nichols	Francis Black	Brick House 4 rooms large yard and wood convenience
18	John Buchie	Francis Black	Brick House shop and two rooms, bakery, and kitchen wood shed yard and wood convenience
<i>Pass Fitzroy Street</i>			
19	Leslie Patterson	Hugh Glass	Large barvaps and wood tent divided into 4 compartments with iron and canvas stable adjoining
20	Unoccupied	Hugh Glass	Unenclosed waste land 27 feet frontage 10 Gertrude Street
21	John Mouton	Hugh Glass	Stone House 9 rooms small yard and stone convenience
22	Charles Barnolley	Hugh Glass	Stone House 9 rooms wood shed small yard and stone convenience
23	Unoccupied	Hugh Glass	Unenclosed waste land 39 feet frontage 10 Gertrude Street

Extract from the Fitzroy roll 1854. Melbourne City Council, Town Clerk's Files, series 2, 1844-1899. VPRS 3/82, unit46, Fitzroy Ward Roll, no 1.



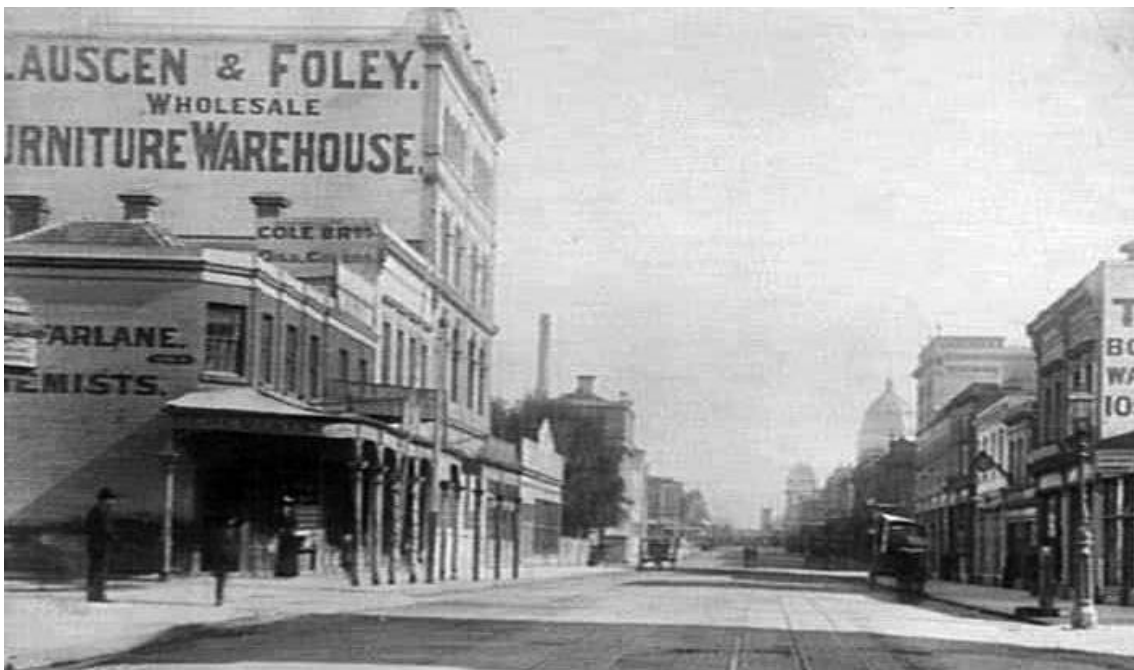
Granite Terrace 1-9 Gertrude St, built for Henry Miller by Robertson & Hale, 1858-9 [now Turnleys]. photograph in 1962 by John Collins. State Library of Victoria H96.210/38.
Glass Terrace, 64-78 Gertrude Street, 72-4 by J E Moore, 1853; balance by David Ross, 1856:
parapet sections sketched on site by Sue Dance, architect.



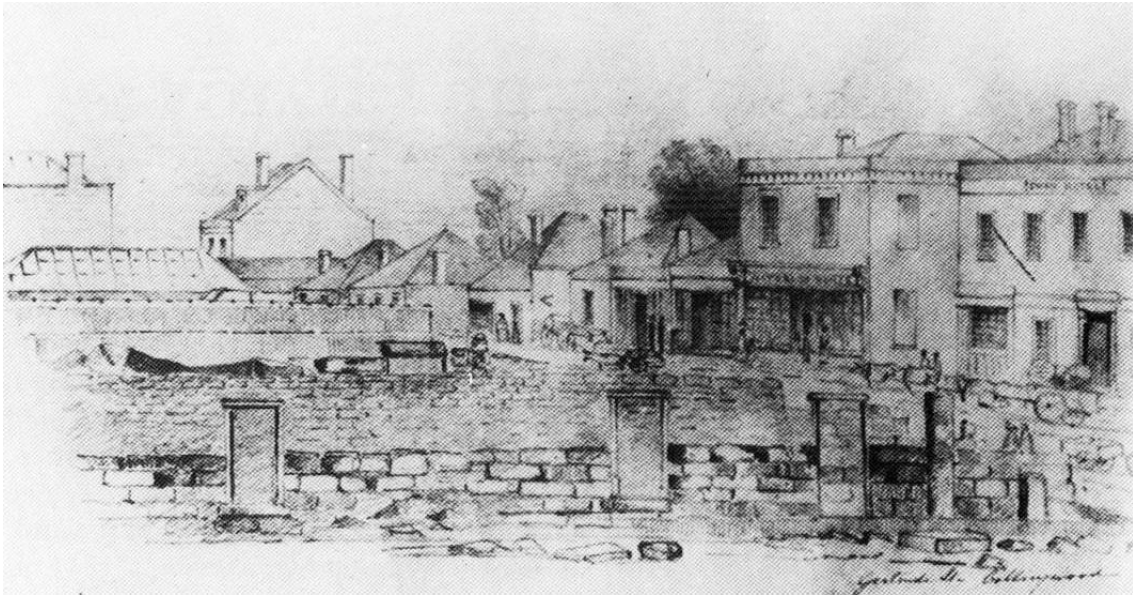
Royal Terrace (B), 39-49 Brunswick St, by Charles Laing, 1856, refaced 1882: north elevation
by Stephen Clements & Jonathan Duggan, University of Melbourne, 1974.



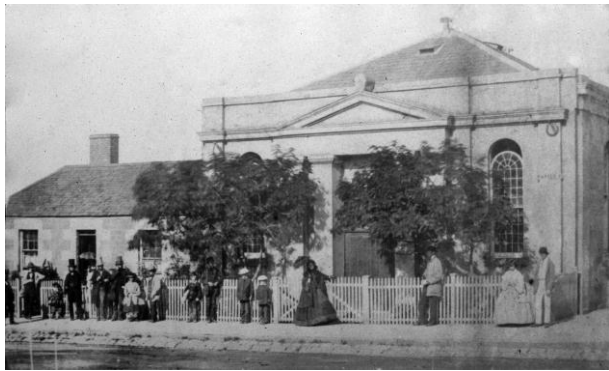
'200 years of shit', on the north side of Royal Terrace, 1988. Philip Castle photograph, Fitzroy Photographic Collection. Remains of original signwriting on the north wall of Dr Crook's surgery: Miles Lewis.



Corner Young St. & Gertrude St. looking west past Brunswick St. to Nicholson St. and the Exhibition Building, c 1890: photographic print : albumen silver ; 13.9 x 20.1 cm., on mount.: State Library of Victoria: H11716



Jane Cannan, 'Gertrude Street, Collingwood', 1853. Royal Historical Society of Victoria,. The construction of the present Gertrude Hotel, cnr Gertrude and Napier Streets.



Melbourne Water Works stopcock cover, Fitzroy: Bateman's patent: Miles Lewis.
United Presbyterian Church, north-east corner of Napier & Gertrude Sts, Fitzroy, possibly 1849-50: cropped & c from a photo by Davies & Co, c 1861-2, State Library of Victoria H26040



Johnston's Furniture Store, Gertrude St, building in the foreground by F M White & Son, 1888-9: view in the 1940s, Fitzroy Photographic Collection
Ross & Smith Wholesale & Family Grocers, [then]144-146 Gertrude Street, Fitzroy: cropped & c from a photo by Davis & Co, c 1861-2, State Library of Victoria LTA 453 (H26039)



Midget Giant concrete blocks from Foster's Coffee Palace, Maffra, Victoria, 1908. 'Emu Brick Machine Pat Appd., No. 1149742509 [sic]', 'D. & W. Chandler Sole Agents Fitzroy' David Watson.

Machine shown with moulding box open.

The "Emu" Cement Block Building Machine

The latest pattern. Makes BRICKS exactly SQUARE and TRUE. The old pattern of machines, with spring fastenings and loose parts, have the moulding box securely fixed, so that when the cement mixture is stamped solid, the sides spring outwards, thus producing an irregular block.

A special feature of the "Emu" Machine is the rigid hinged box, which cannot possibly get out of square.

Each cement block measures 12 x 6½ x 6 in., or equal to 5 ordinary bricks.

The bricks require no trimming after leaving the machine, as no moulding lines can be detected.

Two men with one machine can turn out **200 Cement Blocks per day**, roughly equivalent to 1,000 ordinary bricks; slightly more than four bags of cement being required for this number.

With four plain plates, £7/15/-; with four each plain and fancy plates (as illustrated), £8/5/-; complete outfit (with 15 face plates) for £8/19/-.

With this, all bricks required to build a full-sized house can be made. The plates are quickly interchangeable by means of thumbscrews.

The 'Emu' Cement Block Building Machine, by D & W Chandler of Fitzroy. D. & W. Chandler Ltd., *General Hardware Catalogue. Issue No 51*, (D & W Chandler, Melbourne 1939), p 27