



NEWSLETTER

PO Box 180, Fitzroy, 3065 - fitzroyhistorysociety@yahoo.com.au
www.fitzroyhistorysociety.org.au

NOVEMBER 2021, ISSUE 3

ANNUAL GENERAL MEETING

Featuring, special guest:

DR JULIE CLIFF, AO

LIFE AND DEATH AT CHARLES STREET, FITZROY, IN THE 1870s

6PM TUESDAY 7 DECEMBER 2021

**THE ROSE HOTEL
406 NAPIER STREET, FITZROY**

More information about the event can be located on the email issued on 18 November 2021. Please register if you intend to attend: <https://www.eventbrite.com.au/e/fitzroy-history-society-agm-tickets-210844961957>

Julie Cliff has a family history which extends back to Charles Street, Fitzroy, in the 1870s. Her talk will commence from the family home just 150m south from the Town Hall Reading Room. Julie will explain her discoveries about life and death issues in the nineteenth century, with attention to infectious diseases, and an interesting sequel in the 1940s. She will draw on her life experience in Public Health and Epidemiology on a global scale.



ACKNOWLEDGEMENT OF COUNTRY

The Fitzroy History Society acknowledges the Wurundjeri Woi Wurrung people as the Traditional Owners and true sovereigns of the land now known as Yarra. We also acknowledge the significant contributions made by other Aboriginal and Torres Strait Islander people to life in Yarra. We pay our respects to Elders from all nations - and to their Elders past, present and emerging.



QUEENS PDE - HISTORICAL WALK - VIRGINIA NOONAN

At least ten members and friends braved the windy weather to explore Queens Parade with very knowledgeable Virginia Noonan. Virginia has been researching the history of each business and shop along Queens Parade as part of the community application for Heritage Victoria listing.

Queens Parade began life as a walking track of indigenous peoples towards the Merri Creek from the west. In early Melbourne settlement, the track was significantly developed by Hoddle as a 60-foot-wide boulevard for transportation towards the Heidelberg food bowl for the emerging town and larger country estates granted or purchased by the earliest of settlers. This structure places Queens Parade equally alongside St Kilda Parade and Royal Parade for example. However, as traffic increased the configuration of access cut the parade off as a thoroughfare.

This may be the blessing, as the heritage of the business end is relatively intact as it was developed up to 1930's. The super-market, newsagents and fish shop on the northern side have always been so. Regrettably verandas on southern side were removed in the 1970's making the retention of verandas on northern side an asset.

Virginia has collected all land titles of businesses and will publish a full history in the future. In the meantime, each shop front shows a short history of its creation and occupancy over time, allowing walkers to understand the heritage of Queens Parade.



The group was very appreciative of the research and explanations by Virginia especially as we missed the rain.

A search for "[Queens Parade Shopping Precinct - Clifton Hill](#)" will find the Nomination for inclusion to the Victorian Heritage Register.

Photos by Simon Armstrong & Rachel Axton

YARRA COMMUNITY AWARD WINNERS 2021

Congratulations: TERENCE NOTT, NOTT ARCHITECTURE Contribution to Heritage

Terence regularly volunteers his time and expertise as a Heritage Architect to provide guidance and practical support to local heritage-related projects and challenges. He is an active member of the City of Yarra Heritage Advisory Committee and the Queens Parade Heritage Planning and Traders group.

Terence is a terrific advocate for all things heritage – regularly preparing architectural drawings and speaking on behalf of our community at VCAT hearings and Council Meetings.



Terence Nott - photo from Yarra Council

Congratulations, Terence – and thank you for your ongoing contributions to our community.

Source: YARRA COUNCIL

WEBSITE - NEW DATA PUBLISHED

JOHN O'BRIEN'S HISTORICAL PHOTOS OF FITZROY

John Lockyer O'Brien (1905–1965) was a historian at the University. His collection of about 4,000 photographs was taken in the late 1950s and early 1960s. Many capture the architecture and streetscapes of inner-city Melbourne when the area was in transition between its then 19th century topography and working-class status prior to large-scale demolitions to make way for the construction of the Housing Commission high-rise blocks, and middle-class migration back to the inner-city and subsequent renovation and gentrification of its housing. He was also interested in the early architecture of country Victoria and photographed 19th century homesteads, hotels, churches, banks, railway stations, as well as humbler buildings. He and his wife Laurie owned and resided in a double-storey Georgian-style bluestone house in Hanover Street, Fitzroy.

ALL THE HISTORY... A RESEARCH REPOSITORY

FitzroyMelb.com is an ambitious project to gather all the information available on the history of the Fitzroy houses, buildings and their inhabitants. By identifying and categorising information by its location, it presents information and references for easy access. The project is in its infancy but has already has 450+ locations across Fitzroy and Fitzroy North. Some locations are well researched but many just have a single photo.

PLEASE SHARE THE HISTORY AND PHOTOS THAT YOU HAVE OF FITZROY

This will help the site grow and flourish as a resource for future generations and those just interested in their house and its history.

CITIZEN HISTORIAN PROJECT

by: Anna Wolf

11 GERTRUDE STREET, FITZROY

This original bluestone gem of a house was built c.1853. This is at the same time as the Royal Terrace on Nicholson Street which was constructed between 1854–56, and 5 years before the Granite Terrace at 1–9 Gertrude Street which was completed in 1858.

The house at 11 Gertrude Street was built for Thomas William Mason, a hatter who came out from England in 1852. He bought the land at 11 Gertrude Street in 1853 for £148, it measured 16ft x 98ft. In 1854, Mason set up his successful hat business at 67A Collins Street East. He worked there for 30 years before retiring and his son continued the business. By 1885 Thomas was living at 29 Walker Street Northcote.

The bluestone terrace is built of similar material as the Royal Terrace, with a bluestone facade with sandstone details. Bluestone was easily available from the quarries at East Brunswick and Clifton Hill. The two-storey house contains six rooms, with a small yard and



11 Gertrude Street - A two-storied building occupied by P. Chong Herbalist. c.1958. Photo – John Lockyer O'Brien (1905–1965). Collection held in Melbourne University Archives.



Photos supplied by Anna Wolf



originally a narrow single-storey row of service rooms at the rear, running along the east side.

The Royal Terrace, Granite Terrace, and 11 Gertrude Street were built specifically for accommodation. Further along this side of Gertrude Street were Victorian terraces, mainly shophouses, building with shopfronts on the ground floor, and residence upstairs for the family or owner, or rented out.

Owners and occupiers of 11 Gertrude Street included the following:

– Thomas William Mason and family, hat maker and seller, owner 1853–1867 between 1953–1985.

Alexander Joseph Lugton
1824-1894



– Alexander Joseph Lugton and family, founder of A. Lugton & Sons, a firm of blacksmiths, engineers and boilermakers in Little Lonsdale Street (1859–1952) He became owner between 1867–1903.

The daughter of a Melbourne City Councillor, William Cook, Sarah Halliday Cook became owner between 1904–1953 and rented out the property to a number of individuals and families. We do know that John and William Morton occupied No 11 between 1913–1926. This family were successful musicians.

Between 1927–1966, Phillip and Gertrude Chong and their family lived in the house. Phillip Chong was a Chinese herbalist. He started his practice in Albury. His wife, Mary Gertrude Fosang, was from a

family of successful millet and tobacco growers in Wangaratta. Chong travelled extensively to attend clinics in regional towns such as in Wagga Wagga, Albury, Warragul and Dandenong. Remains of his sign “P. Chong – Herbalist” are probably still on the western wall of the house. You can view it in the earliest photograph of the house.

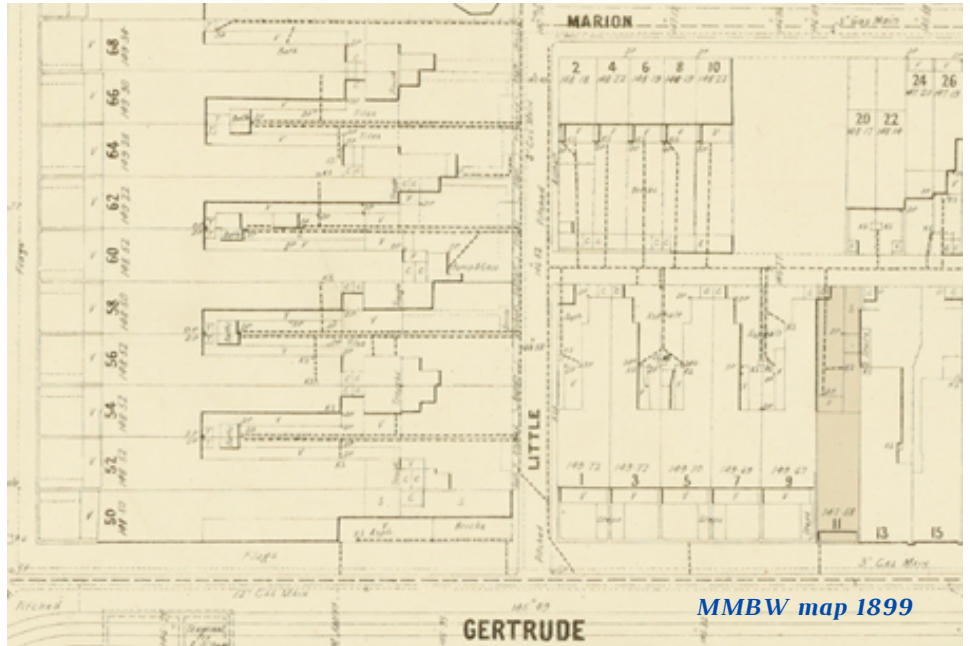


Photo above from Di Allen (Ancestry.com.au) and below photo of 11 Gertrude St occupied by P. Chong Herbalist. c.1958.

Chong, along with many other Chinese herbalists, are significant to the history of Fitzroy and the Chinese community of Melbourne.

Various members of Melbourne's Chinatown owned the property between 1953–1985.

Hoey Kwok Fee and his business partner Joe Yin Louey, became owner and occupier between 1968–1974.



The rear garage was converted into a factory to produce bean sprouts. The business was named Yin Kee Louey & Co. and the produce supplied Chinatown's restaurants. The house is still used as a residence.

PHOTO FROM THE PAST

This photo was recently sent to the History Society. The hotel is the 'Council Club Hotel' and we believe it is the Hotel in Fitzroy of this name which would have been located at 147 Napier Street, Fitzroy. This building was removed as part of the Atherton Gardens project and is located where the park is now (between the residential tower and the child care on Napier Street).



MEMBERSHIP RENEWAL -NOW DUE

Please head to the 'membership' page on our website: www.fitzroyhistorysociety.org.au to update your membership - we have also added new payment options such as PayPal, credit card and Apple Pay. Of course you can still join with a direct transfer..

MEMBERSHIP

Membership is \$20 per person, per year. If you would like to join, please complete the form found on our website:
www.fitzroyhistorysociety.org.au
and follow the instructions on the site.

THE BESWICK BUILDING - 236-252 BRUNSWICK STREET, FITZROY

The Beswicke Building of eight 3 storey shops was built in Brunswick St by 1888-89 for the Australian Property and Investment Co. Ltd. The architect was John Beswick and the builder was Ralph Besant.

Three storey frontages face the street, and there are two storey wings at the rear of each shop. The asymmetric design features a central tower with lunettes, and a corner turret topped by a lantern.



The many occupants in its 130 year history have included:

- Samuel Murphy, hat cleaner, at No 240, for 4 decades from 1916;
- Agnes Baishont and her restaurant at No 242 over 1903-13;
- Walter Monckton, tailor, with his factory and shop at No 246;
- Henry Jacobs, with 15 employees at his boot factory at No 246;
- Mrs Portlock, ladies mantle manufacturer, employing 19 females at No 248;
- Morris Silverman and his family of 13 children at No 252 over 1890-95.

In the 1950s most of the occupants were clothing manufacturers.

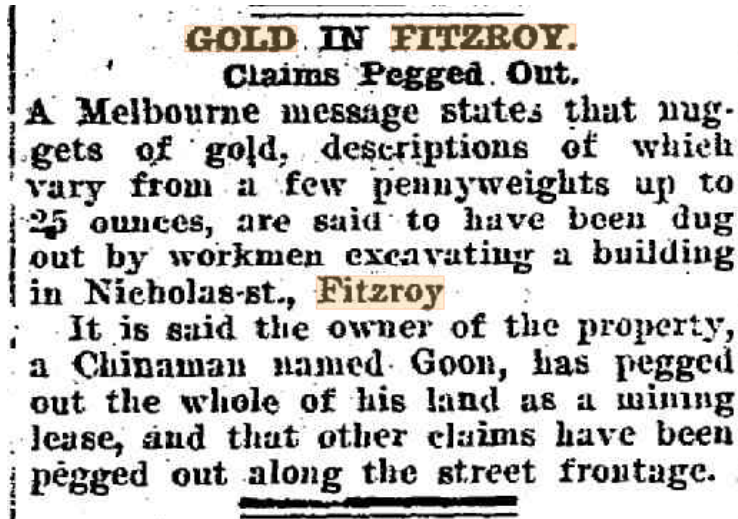
Today the tenants above the shops are from the 'creative industries'.

WRITTEN BY MIKE MOORE



GOLD IN FITZROY

The last thing I expected to find while researching Fitzroy was red hot gold fever. Following the initial article which ran over 10/11 November 1924, there



was a flurry of gold excitement as a claim for a mining lease was lodged on 14 November 1924 covering 20 acres around Mr Goon's Nicholson St property. Notices were delivered advising residents that the underground property rights of their homes was to be sold in order to establish the 'Batman's Hill Gold Mine' (100ft square) and the 'Eastern Hill Gold Mine' (31x110ft).

It was believed by some that a gold reef runs along Nicholson Street from Princess Street.

Thankfully the mines never proceeded, but you never know, if you are renovating or gardening in Nicholson St, Fitzroy, keep an eye out!

WRITTEN BY RACHEL AXTON



INSTAGRAM

In addition to our website and Facebook, FHS now has an Instagram page to promote the history and cultural heritage of Fitzroy and North Fitzroy.

Download the Instagram App and follow us on [@fitzroyhistorysociety](#) for images of Fitzroy and North Fitzroy past and present.

You might also like to follow us on Facebook.

FHS COMMITTEE 2021

President - Peter Woods
Treasurer/Membership - Brendan Mitchell
Secretary - Simon Armstrong
Editor - Rachel Axton
Web - Andy Lanskis
Social-Facebook - Peter Heading
Social-Instagram - Jennifer McKeagney
Members:
Mike Moore, Lina Favrin, Meg Lee

Terry Nott - Member of City of Yarra
Heritage Committee

COMMUNITY ANNOUNCEMENTS

We are happy to share community announcements that align with the preservation of Fitzroy and its history.