

# *REMEMBERING FITZROY*

**A WALK ALONG THE LOST STREETS OF THE ATHERTON PRECINCT**



(FL)

Looking south towards Melbourne in 1880 from the Fitzroy Town Hall tower. All buildings between Napier Street on the left and Brunswick Street on the right, and from the foreground to the far background were demolished in the 1960s and replaced by the Atherton Gardens high-rise estate. Along Napier Street at the left can be seen the two-storey Fitzroy Hotel and the large extant Presbyterian Church (1872). Across the foreground, Charles Street separates Stone's timber factory with its chimney, and Delbridge's stone cutting yard with its crane, from the housing beyond.

**FITZROY HISTORY SOCIETY**  
**22 April 2017**

A detailed street map of the Fitzroy neighborhood in Melbourne, Australia. The map features a grid of streets with various landmarks and points of interest labeled. A prominent thick black rectangle is drawn over the central part of the map, highlighting a specific area bounded by Brunswick Street to the north, James Street to the south, Fitzroy Street to the east, and Napier Street to the west. This highlighted area includes the Yarra river and the Atherton Reserve.

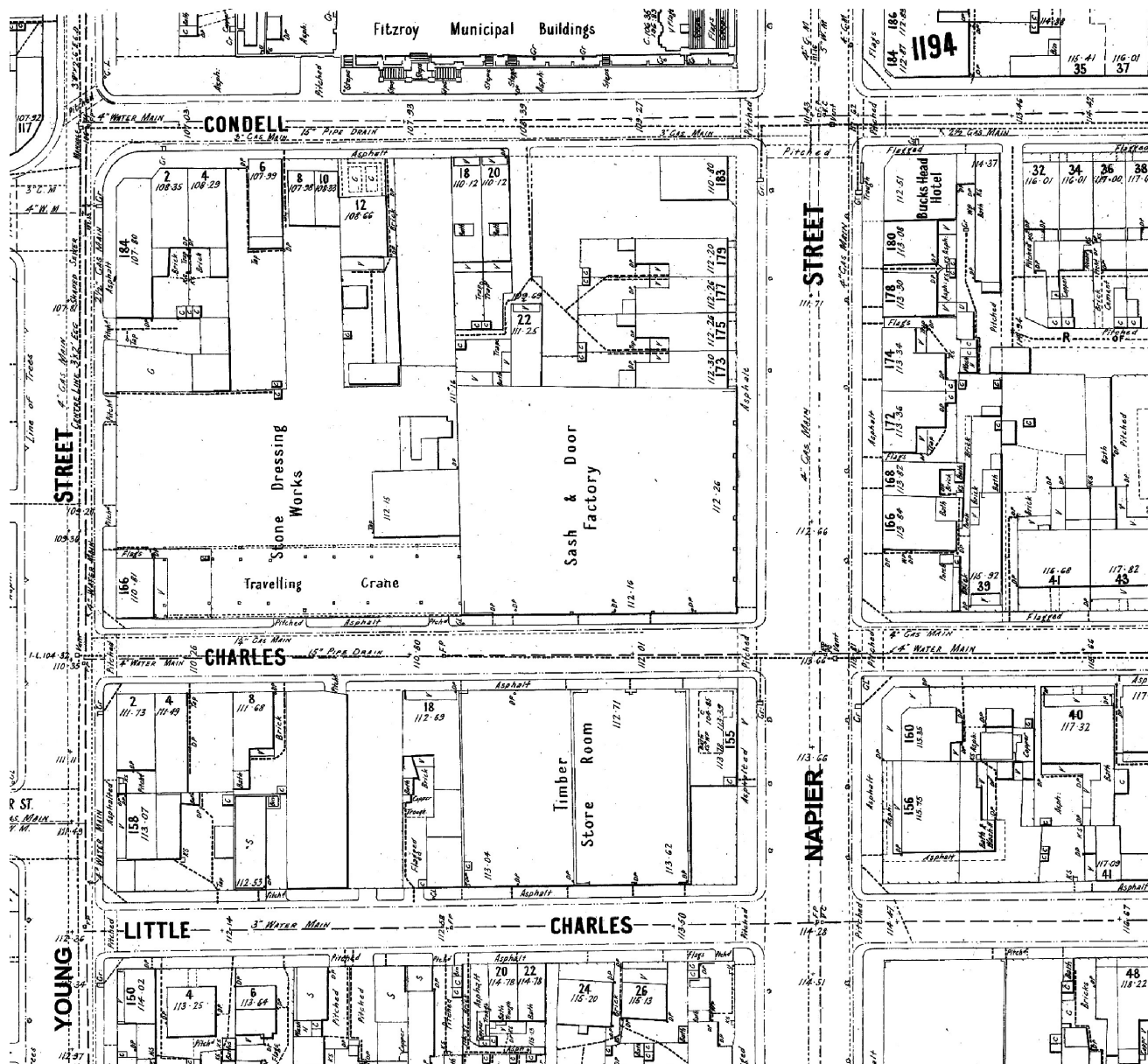
- Streets:** MOOR ST, BRUNSWICK ST, JAMES ST, HAYGARTH PL, ST 155, ST 140, ST 13, ST 127, NAPIER ST, WOOD ST, CONDEALL ST, CHARLES ST, WEBB ST, FITZROY ST.
- Landmarks and Points of Interest:**
  - MCH Town Hall
  - Sacred Heart Prim Sch
  - Cath
  - Fitzroy Creche & Day Nursery
  - Atherton Reserve
  - Cricket Nets
  - Old Colonial Inn
  - Yarra (river)
  - Mosque
  - Summer Hse
  - Comm Hlth Ctr
  - B'hood of St Laurence & Aged Care
  - Sidney Myer Hse
  - Rob Roy
  - BBQ & Play
  - Claypots
  - Youth Centre
  - L. Charles St Webb
  - Untg
- Other Labels:** 3065, 167, 11, 12, 4, 140, 127, 13, 155.

(FMFS, p. 301)

This is a detailed historical map of the Fitzroy Municipal Buildings area in Melbourne, Australia. The map shows a grid of streets and various buildings. Key streets include Young Street, Napier Street, Little Street, Webb Street, Charles Street, and Conell Street. The Fitzroy Municipal Buildings are prominently located in the center. Other notable buildings include the Fitzroy Hotel, Fitzroy Free Presbyterian Church, and various factories and workshops. The map also shows the Fitzroy River and the Fitzroy Bridge. The map is oriented with North at the top.



## John Stone, timber merchant, centred on Napier and Charles Streets, from 1858 to 1970.



### HUGE FIRE - FITZROY TOWN HALL IN DANGER

At 4am on 30 July 1912, a fire destroyed most of Stone's machinery and timber yard bounded by Napier, Condell, Charles & Young Streets.

"the fire brigade and 90 firemen were promptly on the scene".

"a number of the constables of Fitzroy who were patrolling their beats arrived at the fire and aroused nearby occupants."

Elderly ladies in nearby cottages were gallantly rescued, and Mrs Muir escaped before a brick wall collapsed on her house.

"All the windows in the Town Hall facing Condell-street were shattered, and some beds in the top storey, occupied by constables, caught alight, . . the gate on the watchhouse was ignited . . . and the prisoners were taken from their cells."



Stone's property on SW corner of Napier and Little Charles Streets. (O'Brien)

Compiled from contemporary newspaper reports found in trove ([trove.nla.gov.au/newspaper](http://trove.nla.gov.au/newspaper))

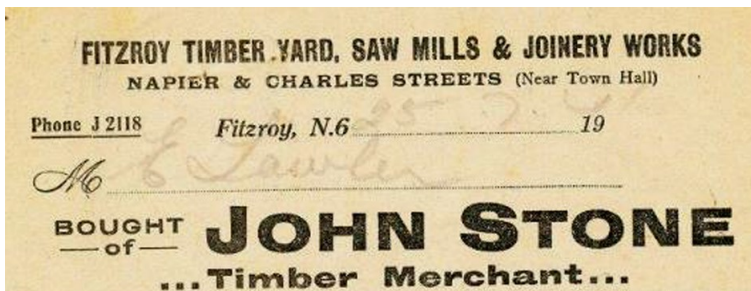




SW corner Napier and Condell Streets in 1948. The Stone timber mill opposite the south side of the Town Hall.  
(O'Brien)



SW corner of Napier and Condell Streets in 1974. (CUA)



John Stone and an apprentice commenced the timber business and the manufacture of doors and window frames in 1858. Initially they were at the corner of Napier and Charles Streets, and the business grew to occupy large sites nearby. By 1900 it employed over 100, many of whom had worked there for two, three or four decades. Also in 1900 they were taking over the nearby historic stone-yard site of Delbridge and Thom-

as, adjacent in Charles Street. John Stone died in 1908, and his probate records indicate the business then owned nine horses, two heavy wagons, eleven drays, a truck, two lorries and a buggy. At the time of the fire there in 1912, 170 workers were affected.

Stone's descendents continued to operate the business and it was still there until 1970.

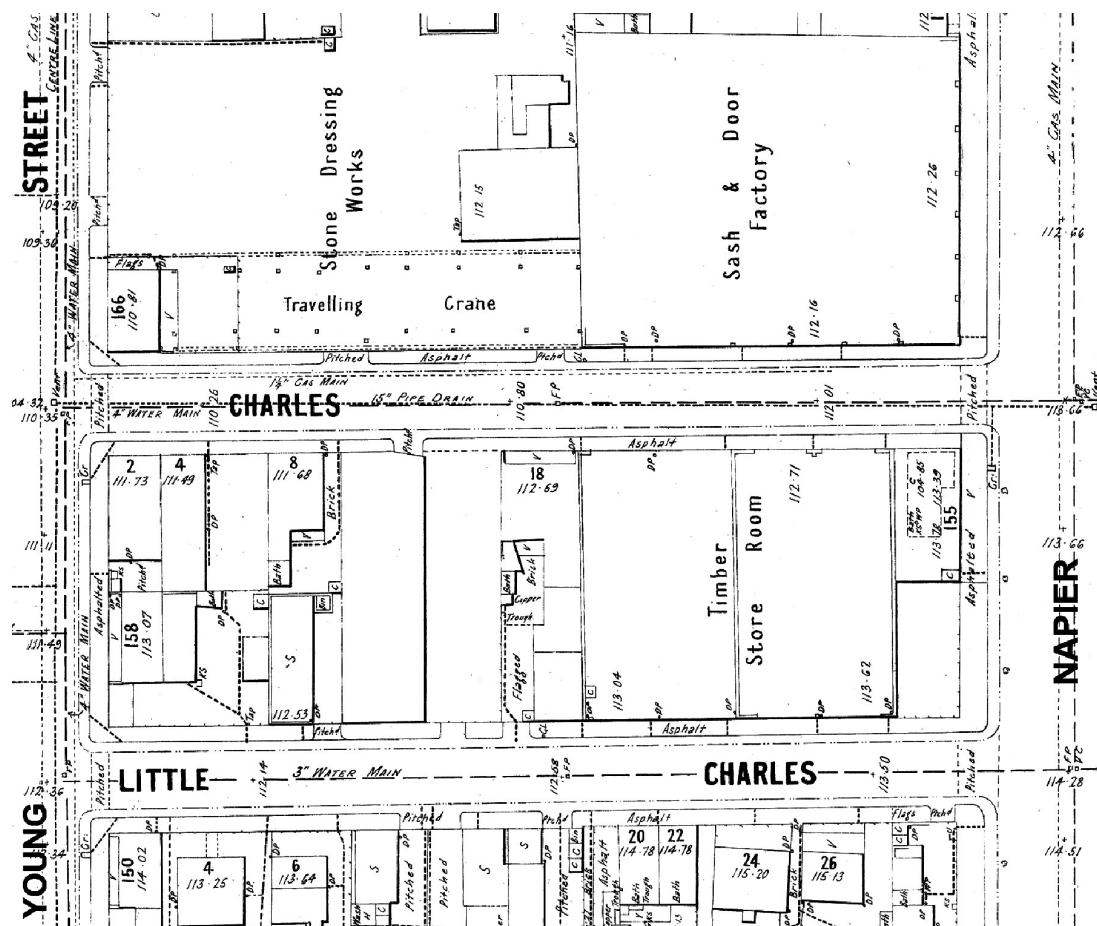


Stone property on the SE corner of Napier and Charles Streets.  
(O'Brien)



Stone property on the SW corner of Napier and Charles Streets. (O'Brien)

Charles Street, from Napier Street to Young Street.



The north side of Charles St. was occupied by Stone's Sash & Door Factory and Delbridge's Fitzroy Stone Sawing Works.

The stone works were contractors for the building of Parliament House in the 1870s, and their stocks included Malmsbury Bluestone, Sydney Freestone, steps, sills, flagging and kerbing.

Delbridge died in 1887, and the site was taken over by Stone from 1900.

**FITZROY STEAM STONE**  
SAWING WORKS.  
15, CHARLES STREET, FITZROY  
(Back of Wesleyan Church.)

**DELBRIDGE AND THOMAS**  
PROPRIETORS.

A large quantity of Flagging, Steps, Sills,  
Monumental Kerbings, &c., always in stock,  
cheap.

Estimates Given for any kind of Work.

Fitzroy City Press, Sat. 20 May, 1882, p.2.

**Messrs. DELBRIDGE and THOMAS**  
Have on hand at their Steam Stone Sawing Works,  
Charles-street, Fitzroy, a very large stock of Malms-  
bury bluestone in large blocks, from which they can  
supply steps, landings, monument bases, or any extra  
sizes of stone work that may be required, with  
despatch.

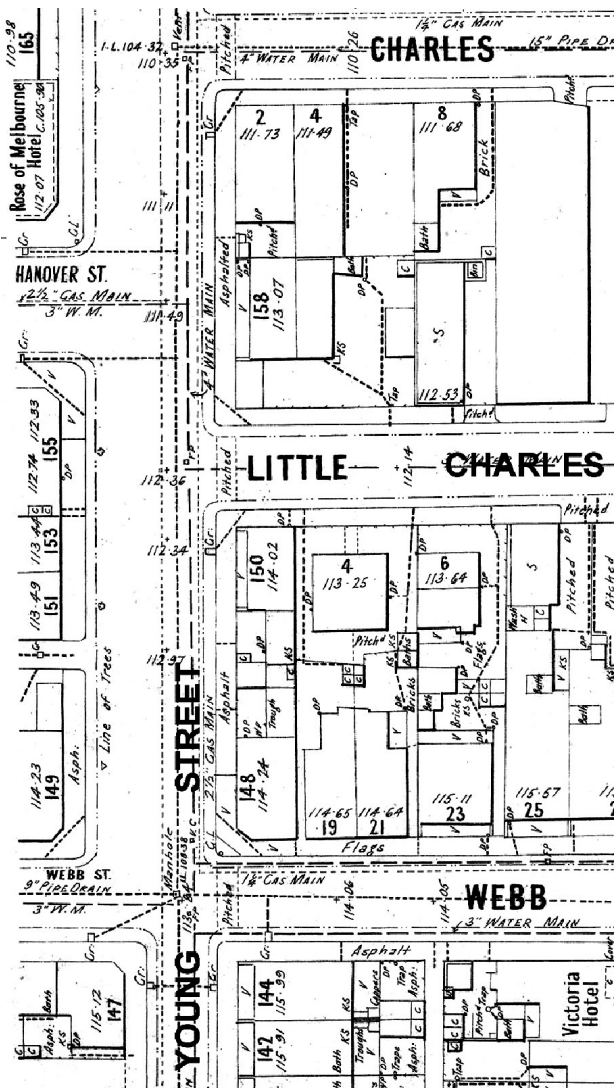
Messrs. D. and T. are also agents for two kinds of  
first class Sydney Freestone, which can be supplied in  
unlimited quantities at mod rate prices.

Architects, &c., are respectfully invited to inspect  
the samples worked on their premises.

The Age, Thurs. 5 June, 1884, p.3.



## Young Street from Charles Street to Webb Street



South along Young Street west side, from Charles to Webb Street. (O'Brien)



150 & 148 Young Street, on SE corner of Little Charles Street, built by Hugh Kneen from July 1860. (O'Brien)



4 Little Charles Street. Brick and cement house of 4 rooms,; no bath nor wash-house. Age 77 years. (MRS)



79, 81, 83 Young St, west side, near Gertrude Street. (O'Brien)

### Hugh Kneen

148 and 150 Young St occupied the block from Lt Charles to Webb Streets, and were owned and built by Hugh Kneen in the 1860s. He was a carpenter who had arrived from the Isle of Man via Liverpool in January 1853. He was a Fitzroy councillor for four years from 1872 and mayor in 1874.

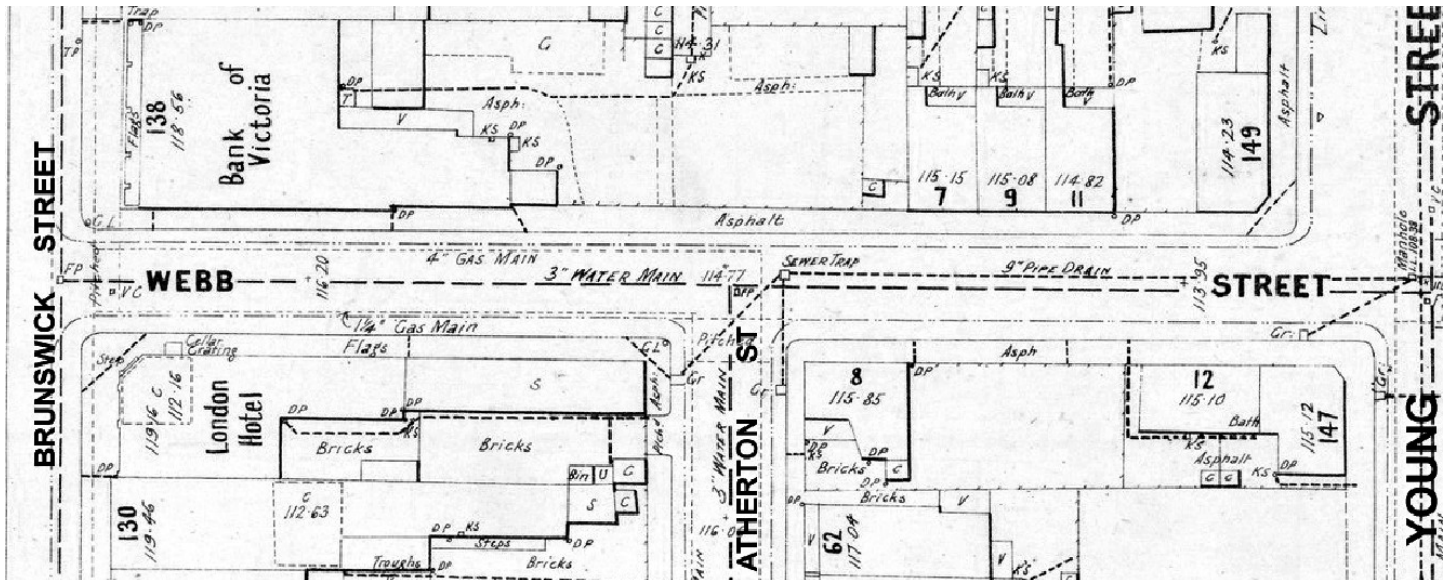
Kneen lived here until the 1880s before retiring to his Tynvald property on two acres at Portarlinton where he died in 1912 aged 92.



## Webb Street



Webb Street as recorded in the MMBW plan of 1899.



8 Webb Street.

(O'Brien)



12 Webb Street.

(O'Brien)

Larcher's Dairy was at 27 Webb Street.

**H. LARCHER,**  
**WHOLESALE & RETAIL DAIRYMAN,**  
**Lucerne and Chelsworth Park Farm Dairies,**  
**Alphington and Ivanhoe.**  
**Depot—27 WEBB STREET, FITZROY.**

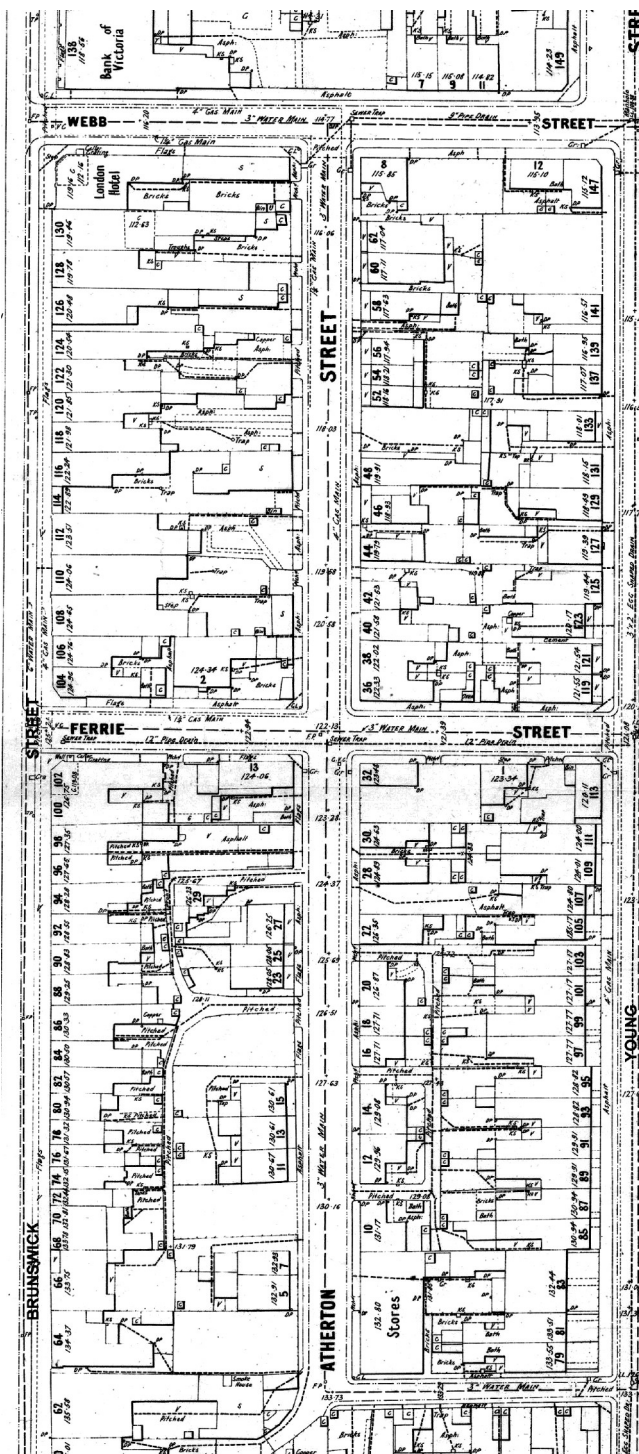
**One cow's milk for invalids and children.**  
**Orders punctually attended to.**  
**Fresh pure cream daily.**

Jewish Herald, Fri. 6 Jan. 1888, p. 12.

There were four hotels along Webb Street in 1900:

- London Hotel, facing Brunswick Street.
- Victoria Hotel, at corner of Little Napier Street.
- Council Club Hotel, at NW corner of Napier Street.
- Fitzroy Hotel, at the SE corner of Napier Street.

## Atherton Street.



View to south from Webb Street.

(O'Brien)



Atherton Street at corner of Ferrie Street, looking north.

(O'Brien)

Most favorably located building allotments in  
New Town.

**MR. H. H. ATKINSON**

Will submit to public competition on the ground  
on **Monday, 3rd January, 1842, at 12 o'clock**  
precisely,

**FIFTY** advantageously situated portions of  
building ground with frontages of thirty-  
one feet four inches each to Brunswick and  
Atherton-streets, New Town.

Terms to sale.

Port Phillip Gazette, 1 Jan. 1842, p.2.

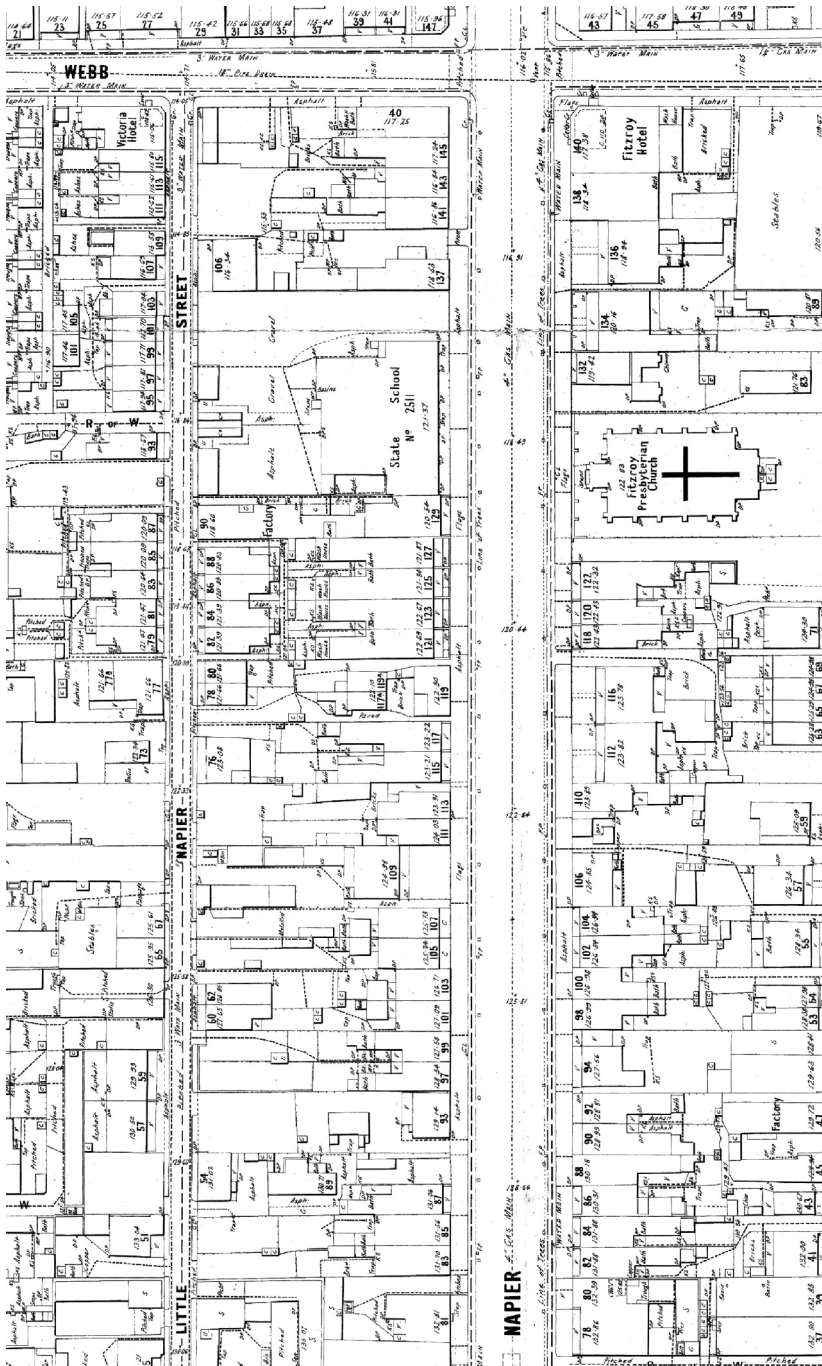


8 & 6 Atherton Street.

(O'Brien)



## Napier Street (and Little Napier Street)



145 Napier Street.

(O'Brien)



Fitzroy Hotel, on SE corner of Napier Street in process of being demolished.

(O'Brien)

The Napier Street State School, No. 2511, opened on 1 March 1883 with an attendance of 438 pupils. In 1931 the pupils were transferred to the George Street school and to Cambridge Street, Collingwood. The building was then converted into the Correspondence School.

Below: Part of entry for Napier Street, from Sands & McDougall, 1904, showing from State School to Stone's.

120 Long & Smith, enters  
State school No 2511  
—Clarkson, Geo.,  
head teacher  
Mason, Mrs Sarah A.,  
caretaker of school  
137 Daniels, Geo. F., &  
Stutley, Thom., jr.  
141 Brook, Wm.  
143 Bryant, Mrs Emma  
145 Sims, Mrs Ellen,  
shirt enameller  
Charnock, George  
Webb at  
147 Council Club hotel—  
Shannon, Mrs F.  
Lt Charles at  
155 Stone, J., timber merchant  
offices



View north along Little Napier Street c.1908 (White's boot factory on left at no. 69).

(Melb. C.C. archives)

129 Napier Street. (O'Brien)





Looking north in 1880 from the Fitzroy Town Hall tower.



#### Sources

- FMFS Fitzroy, Melbourne's First Suburb.  
- Ch 34, pp 299-300, Atherton Street.  
- Ch 35, pp 301-309, Living in the High-rise.
- FL Fitzroy Local History Photograph Collection.
- O'Brien J L O'Brien photograph collection, held at the University of Melbourne Archives.
- MMBW Melbourne & Metropolitan Board of Works plans, on-line at [slv.vic.gov.au](http://slv.vic.gov.au)
- CUA Committee for Urban Action photograph collection, on-line at [slv.vic.gov.au](http://slv.vic.gov.au)
- MRS Fitzroy Municipal Rating Study, 1948.



**Present day view SW across the Atherton estate from the corner of Napier and Charles Streets.**



**Present day view across the Atherton estate towards the Fitzroy Town Hall.**